

# Adriatic Yacht Charter™

www.ayc.hr

## NEW !! - AYC yacht charter base @ Island MURTER

Only 40 minutes by car from Zadar or Split !!



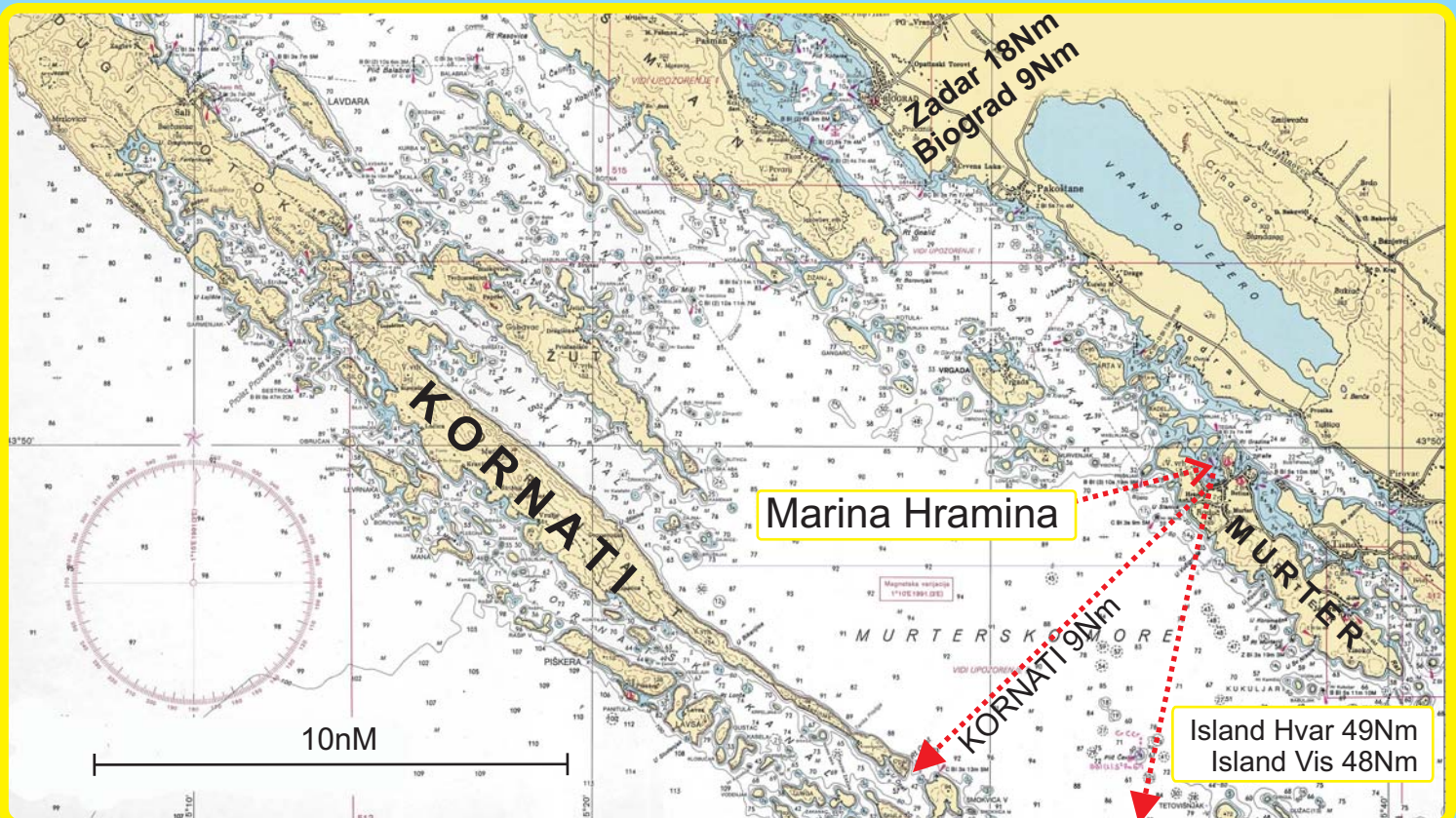
**MARINA HRAMINA** - is situated in the well-protected Hramina Cove in the north-western part of the island of Murter, only 7 n.m. from the breathtakingly beautiful Kornati Archipelago.

Transfer from Split and Zadar airport ▶ 10 €/person/way  
Minimum price is ▶ 50 €/transfer (5 persons)

**Murter** - one of favorite nautical destinations on Adriatic coast, a village located on the northern part of the island of Murter. Thanks to its vicinity to **Kornati National Park** and other islands of Sibenik Archipelago, many yachsts and motorboats are berthed there, at **marina Hramina** located at the bay with the same name. Other marinas are near: Jezera, Betina and Tisno, which are, together with marina Hramina, probably the most important nautical bases of the Adriatic Sea.

Murter offers you beautiful beaches, historical architecture, large fields of olive and fig trees. Slanica, Kosirina, Podvrške, Čigrađa are the most popular sand beaches on Murter island which can be explored in minutes with car (island of Murter is 12km long and 2km wide). The island is connected to the mainland by bridge in place called Tisno. At village of Murter visitors have wide offering of private accommodation and recreational contents.

The **Kornati archipelago** consists of 140 islands, islets and cliffs, with 89 of them declared a National Park because of its natural beauty due to its numerous coves and crystal clear blue waters. It spreads over a surface of 220m<sup>2</sup> and declared a national park in 1980 due to its unique shape and beauty. There are no permanent residents of the islands and most of the area belongs to the people of Murter island who come to tend the olive groves, the vineyards and orchards.



# Adriatic Yacht Charter™

www.ayc.hr

## NEW !! - AYC yacht charter base @ Island MURTER

The Kornati archipelago consists of 140 islands, islets and cliffs, with 89 of them declared a National Park because of its natural beauty due to its numerous coves and crystal clear blue waters. It spreads over a surface of 220m<sup>2</sup> and declared a national park in 1980 due to its unique shape and beauty. There are no permanent residents of the islands and most of the area belongs to the people of Murter island who come to tend the olive groves, the vineyards and orchards.

They have cottages there, which nowadays mostly are offered as tourist accommodation units, specialized for robinson style holidays (self catering houses with no electric power and running water).

On Kornati there are preserved traces of the past, the oldest archaeological findings of ruins from an Illyric village, stone graves and grave mounds.

The renowned Kornati „crown“ (steep or sheer rock) which faces the open sea, a characteristic found on all of the islands, is of distinct eminence and value in this region. Inlets which stand out due to their magnificent beauty are by far Koromacna, Opat, Stiniva, Striznja, Sipnata, and Lopatica.

In the National Park Kornati there are around 30 piers and about 20 places where guests can try wonderful seafood and traditional cuisine.

From the marina, guests can find shelter on the island Zutu which is mainly uninhabited except for a few houses which are lived in from time to time and can be rented out to those who enjoy seclusion, better known as Robinson tourism. Robinson tourism is developing and guests are left to enjoy the beauty and quiet of Kornati.

This region is ideal for water sports. The marina on the island Piskera is located in a small inlet which is protected from the open sea by three smaller islands. Guests will find a restaurant which offers original seafood specialties and will feel right at home in Robinson tourism. The island Lavsa also offers shelter to anyone sailing by. The island Purara is an especially preserved area - an island in the heart of the national park known to be an ornithological and floristical reserve. That is why approaching the island and coming to shore are prohibited.

